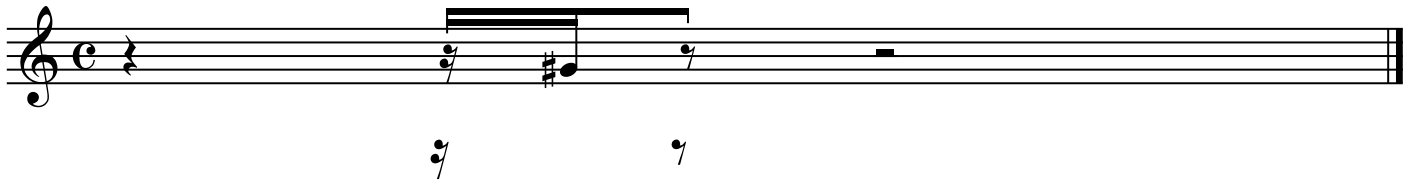


Centered stemlets



Use the plug-in Move Rests to move the rests down below the bottom of the page.

In that way they will not print.

Use the Speedy Entry dialog box Edit Frame to move the rests to a Horizontal Position of -4 Points.

For each rest, enter in Voice 2 the same note value. Change the note into a rest.

This is the rest you that will show in the layout.

NB: You may have to flip the stems (flip the beam start), and you may have to use the Special Tools Tool sub-tool Beam Angle Tool to adjust the stem lengths.